

## Cycle Drum BXMW/DRUM



### Standard Unit Dimensions

Width: 2700mm

Height: 1650mm

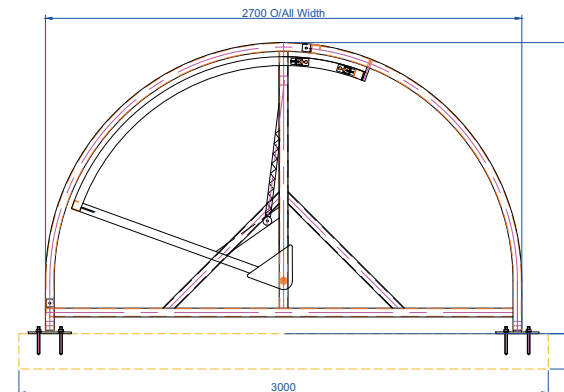
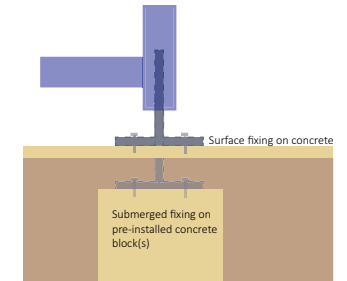
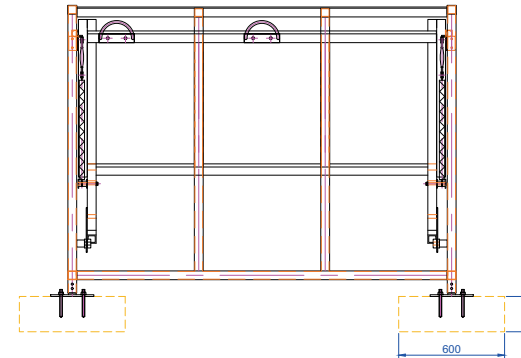
### Length with Capacities

2150mm      4 cycles

2600mm      6 cycles

### Features

- Robust modular construction
- Rear/Sides and door clad in plastisol flat sheet
- Welded end frames
- Aluminium door frame with gas strut assisted door open/closure
- Made from heavy-duty mild steel box section
- Assembled with anti-tamper high strength bolts
- Anti-climb end frames
- Adjustable baseplates
- Hot dip galvanized to BS EN ISO 1461:2009
- Weather resistant cladding



## Cycle Drum BXMW/DRUM

### Materials Used

Framework - Mild Steel  
Cladding - Plastisol Sheeting  
Fasteners - Zinc Plated  
Cover Strips - Pre-galvanized steel flat  
Door Frame - Light weigh aluminium

### Finish Options (Framework)

Hot-Dip Galvanized to BS EN ISO 1461:2009  
Hot-Dip Galvanized & Polyester Powder Coated 60mm-120mm dft  
Hot-Dip Galvanized with Duplex (Zinc Coated) Powder Coating (coastal) 180-240 overall dft

### Weather Resistance

Cladding is UV Stabilised  
Wind resistant to 23m/s

### Fire Resistance

Cladding is fire tested to '1Y' for BS 476

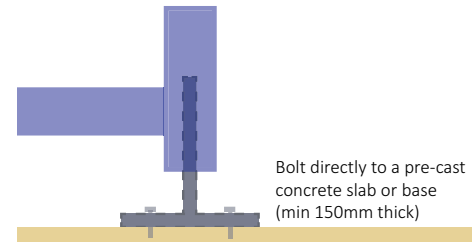
### Design-Life, Guarantees & Warranties (terms apply)

25 year structural guarantee  
34 year (min) life expectancy for Hot Dip Galvanizing  
8-10 year life expectancy on standard powder coatings  
10-15 year life expectancy on Duplex (Zinc Coated) powder coatings  
10 years manufacturers guarantee on cladding material  
10 year warranty on product materials  
12 year warranty on parts & labour

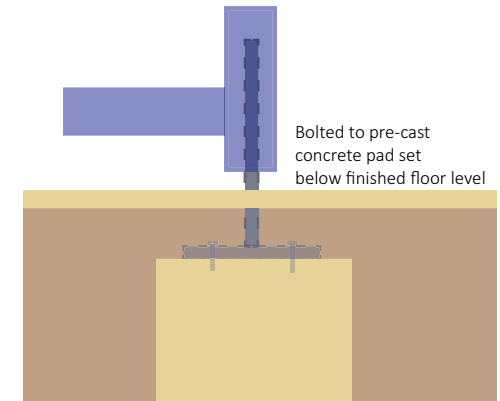
*Please Note: All information on this data sheet is subject to orientation (N,S,E,W) altitude and proximity to buildings, but is sufficient for use as general/preliminary information)*

### Installation

#### Surface fixing on concrete



#### Submerged Fixing



### Options

Steel Profile, Trapezoidal roof cladding  
PETg uv Cladding to Roof, Sides and door  
Extended adjustable baseplates for submerged fixing  
Digital Mechanical or Keyed Locks  
Powder Coating to a wide range of colours  
LED or solar lighting  
Full Installation Service  
Varied Range of Cycle Racks  
Varied Range of Cycle Stands  
Custom Vinyl Graphics

### Colours/Finishes



THE COLOURS SHOWN ARE A GUIDE ONLY.  
PLEASE CHECK A COLOUR CHART TO SEE THE ACTUAL COLOUR.