

Sovereign Cycle Shelter BXMW/SOV



Standard Unit Dimensions

Width: 2200mm

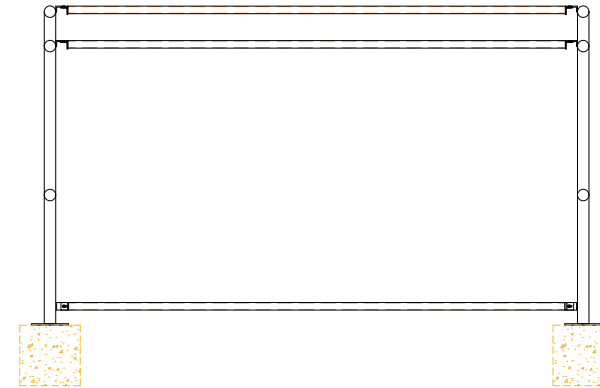
Height: 2100mm

Length with Capacities

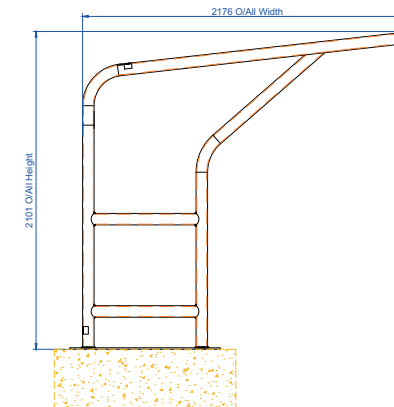
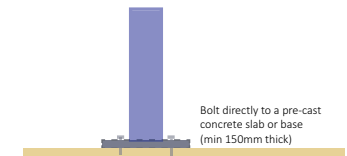
4100mm 10 cycles

Features

- Robust modular construction
- Load bearing purlins
- Welded end frames
- Steel Profile, Trapezoidal roof/rear cladding
- Made from heavy-duty mild steel circular section
- Assembled with anti-tamper high strength bolts
- Adjustable baseplates
- Hot dip galvanized to BS EN ISO 1461:2009
- Weather resistant cladding



Surface fixing on concrete



Sovereign Cycle Shelter BXMW/SOV

Materials Used

Framework - Mild Steel
Cladding - Steel Profile, Trapezoidal roof cladding
Fasteners - Zinc Plated
Cover Strips - Pre-galvanized steel flat

Finish Options (Framework)

Hot-Dip Galvanized to BS EN ISO 1461:2009
Hot-Dip Galvanized & Polyester Powder Coated 60mm-120mm dft
Hot-Dip Galvanized with Duplex (Zinc Coated) Powder Coating (coastal) 180-240 overall dft

Weather Resistance

Cladding is UV Stabilised
Wind resistant to 23m/s

Fire Resistance

Cladding is fire tested to '1Y' for BS 476

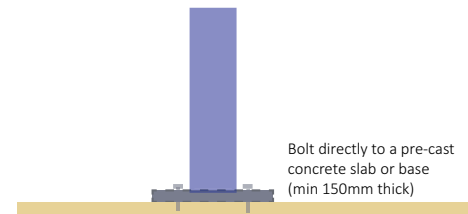
Design-Life, Guarantees & Warranties (terms apply)

25 year structural guarantee
34 year (min) life expectancy for Hot Dip Galvanizing
8-10 year life expectancy on standard powder coatings
10-15 year life expectancy on Duplex (Zinc Coated) powder coatings
10 years manufacturers guarantee on cladding material
10 year warranty on product materials
12 year warranty on parts & labour

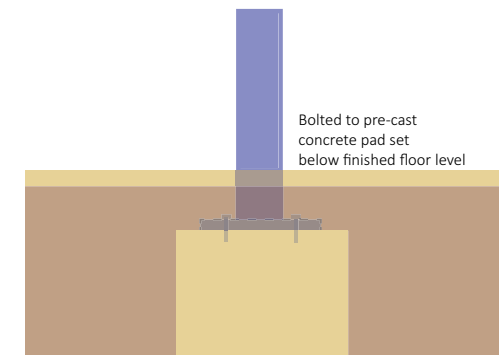
Please Note: All information on this data sheet is subject to orientation (N,S,E,W) altitude and proximity to buildings, but is sufficient for use as general/preliminary information)

Installation

Surface fixing on concrete



Submerged Fixing



Options

Powder Coating to a wide range of colours
LED or solar lighting
Full Installation Service
Varied Range of Cycle Racks
Varied Range of Cycle Stands

Colours/Finishes



THE COLOURS SHOWN ARE A GUIDE ONLY.
PLEASE CHECK A COLOUR CHART TO SEE THE ACTUAL COLOUR.