

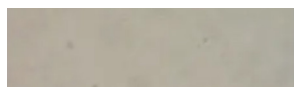
Timperley Concrete Bench BX211002



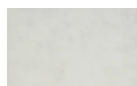
Standard Unit Dimensions:

Length: 3600mm (2x1800mm)
Width: 600mm
Height: 450mm
Weight: 2280kg

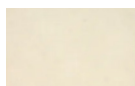
Concrete Colours/Finishes:



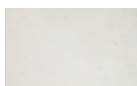
Budget Grey BG01
Dressed



Light Grey LG02
Dressed



Buff YL01
Dressed



White WH03
Dressed



Red RD04
Dressed

The colours shown are a guide only.
Please check a colour chart to see the actual colour.

Product Information

With a matt finish the Timperley Concrete Bench adds texture as well as interest to its environment. Its versatility makes this a high-end addition to any landscape design, whether it be contemporary or rustic, decorative or industrial.

Features

- Free standing seat
- Supplied in two sections
- Supplied in budget grey BG01 in a dressed finish as standard

Materials Used

- Precast Concrete

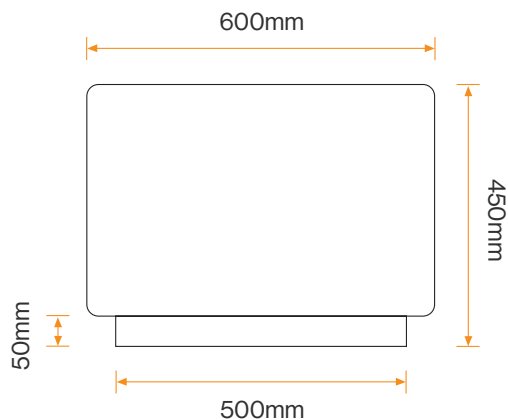
Options

- Can be supplied in a range of colours in an acid etch, exposed aggregate or polished finish

Broxap Limited, Rowhurst Industrial Estate, Chesterton, Newcastle-under-Lyme, Staffordshire, ST5 6BD T: 01782 564411 E: info@broxap.com W: www.broxap.com

Timperley Concrete Bench BX211002

Diagram



Installation

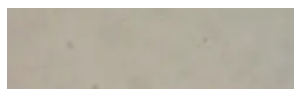
Free Standing
Seat



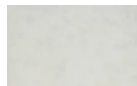
Standard Unit Dimensions:

Length: 3600mm (2x1800mm)
Width: 600mm
Height: 450mm
Weight: 2280kg

Concrete Colours/Finishes:



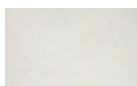
Budget Grey BG01
Dressed



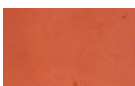
Light Grey LG02
Dressed



Buff YL01
Dressed



White WH03
Dressed



Red RD04
Dressed

The colours shown are a guide only.
Please check a colour chart to see the
actual colour.

Broxap Limited, Rowhurst Industrial Estate, Chesterton, Newcastle-under-Lyme, Staffordshire, ST5 6BD T: 01782 564411 E: info@broxap.com W: www.broxap.com