

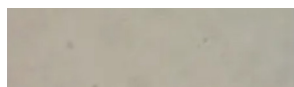
Fallowfield Bench BX211001



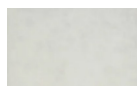
Standard Unit Dimensions:

Length: 1800mm
Width: 600mm
Height: 450mm
Weight: 1100kg

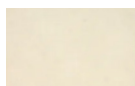
Concrete Colours/Finishes:



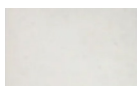
Budget Grey BG01
Dressed



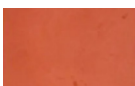
Light Grey LG02
Dressed



Buff YL01
Dressed



White WH03
Dressed



Red RD04
Dressed

The colours shown are a guide only.
Please check a colour chart to see the actual colour.

Product Information

The Fallowfield Bench is a roomy seat, which gives way to the option of adding timber slats and armrests. It has a strong presence at any spot, whether coupled up to allow more people to sit together or sited on its own.

Features

- Free standing seat
- Low maintenance concrete bench
- Supplied in a dressed finish as standard

Materials Used

- Precast Concrete

Options

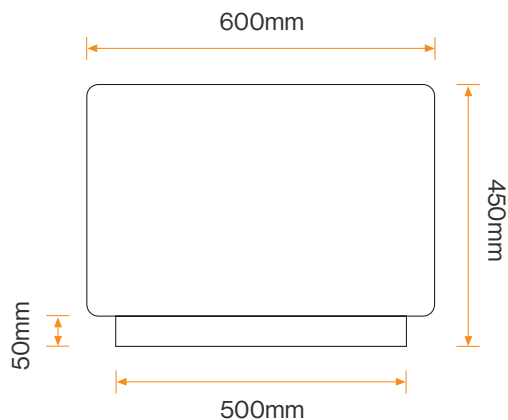
- Can be supplied in a range of colours in an acid etch, exposed aggregate or polished finish
- Also available with timber slats and armrests
- Additional lengths available: 1200mm, 1500mm, 2000mm, 2400mm

Broxap Limited, Rowhurst Industrial Estate, Chesterton, Newcastle-under-Lyme, Staffordshire, ST5 6BD T: 01782 564411 E: info@broxap.com W: www.broxap.com



Fallowfield Bench BX211001

Diagram



Installation

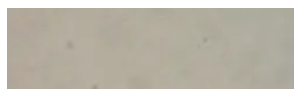
Free Standing
Seat



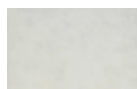
Standard Unit Dimensions:

Length: 1800mm
Width: 600mm
Height: 450mm
Weight: 1100kg

Concrete Colours/Finishes:



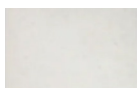
Budget Grey BG01
Dressed



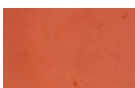
Light Grey LG02
Dressed



Buff YL01
Dressed



White WH03
Dressed



Red RD04
Dressed

The colours shown are a guide only.
Please check a colour chart to see the
actual colour.

Broxap Limited, Rowhurst Industrial Estate, Chesterton, Newcastle-under-Lyme, Staffordshire, ST5 6BD T: 01782 564411 E: info@broxap.com W: www.broxap.com