

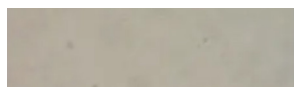
Gorton Concrete Cube Seat BX211000



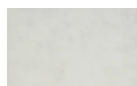
Standard Unit Dimensions:

Length: 600mm
Width: 600mm
Height: 450mm
Weight: 384kg

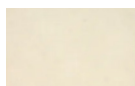
Concrete Colours/Finishes:



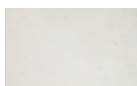
Budget Grey BG01
Dressed



Light Grey LG02
Dressed



Buff YL01
Dressed



White WH03
Dressed



Red RD04
Dressed

The colours shown are a guide only.
Please check a colour chart to see the actual colour.

Product Information

The Gorton Concrete Cube Seat is a great choice for landscapes with clever spacings and layouts. Mix and match with urban or natural surroundings or get in touch to discuss the option of adding slatted timber seats.

Features

- Free standing seat
- Low maintenance concrete bench
- Supplied in a dressed finish as standard

Materials Used

- Precast Concrete

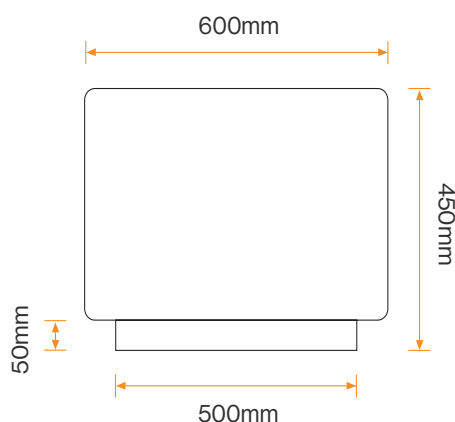
Options

- Can be supplied in a range of colours in an acid etch, exposed aggregate or polished finish

Broxap Limited, Rowhurst Industrial Estate, Chesterton, Newcastle-under-Lyme, Staffordshire, ST5 6BD T: 01782 564411 E: info@broxap.com W: www.broxap.com

Gorton Concrete Cube Seat BX211000

Diagram



Installation

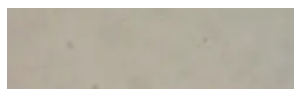
Free Standing
Seat



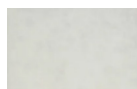
Standard Unit Dimensions:

Length: 600mm
Width: 600mm
Height: 450mm
Weight: 384kg

Concrete Colours/Finishes:



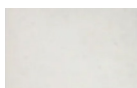
Budget Grey BG01
Dressed



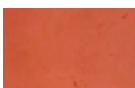
Light Grey LG02
Dressed



Buff YL01
Dressed



White WH03
Dressed



Red RD04
Dressed

The colours shown are a guide only.
Please check a colour chart to see the
actual colour.

Broxap Limited, Rowhurst Industrial Estate, Chesterton, Newcastle-under-Lyme, Staffordshire, ST5 6BD T: 01782 564411 E: info@broxap.com W: www.broxap.com