



Halo seating specified for roof top garden of prestigious 2 Pancras Square, Kings Cross, London.

## BX60 Halo Modular Circular Seating & Planters

*Halo is a beautifully striking yet comfortable seat which can be adapted to fit any size of space.*

BX60 101 3m seat segment

BX60 117 4m seat segment

BX60 114 5m seat segment

8 segments for a complete circle

BX60 101 A 3m planter segment

8 segments for a complete circle

# GeoMet

# broxap®

Seating, water features & planters

01782 564411 [www.broxap.com](http://www.broxap.com)





## BX60 Halo Modular Seating

Simple curves and colour add beauty and fluidity to exteriors, interior meeting areas, showrooms, exhibition spaces, foyers and lobbies.

Halo can be fitted together to create a circle measuring 3m, 4m or 5m in diameter or can be designed to snake around outdoor or indoor features.

Our curvaceous circular designs are composite moulded and create striking landscape features. Each seat can be made in any BS/RAL colour to match any colour scheme or corporate interior. Halo is easy to install as it's lightweight and modular in construction.

1 & 2: Halo seating and planters recreational space installation at Media City, Salford, Manchester.

3: Halo seating and Rondo table, show garden centerpiece at the RHS Flower Show, Hampton Court.

4: Halo seating is available in any BS or RAL colour, to match your colour scheme or corporate identity.





## BX60 Halo Modular Planters

To complement our range of outdoor furniture we've introduced a stylish range of matching planters in Halo and Cube-shape designs.

Each planter can be made in any BS/RAL colour to match any colour scheme or corporate interior.

Halo seating and planters at the RHS Flower Show, Malvern.

Cube tables and a Bench coffee table completed the look for this award winning show garden.







Halo seating and Cube tables were specified for a prestigious roof-top garden at Two Pancras Square in London's bustling King's Cross.



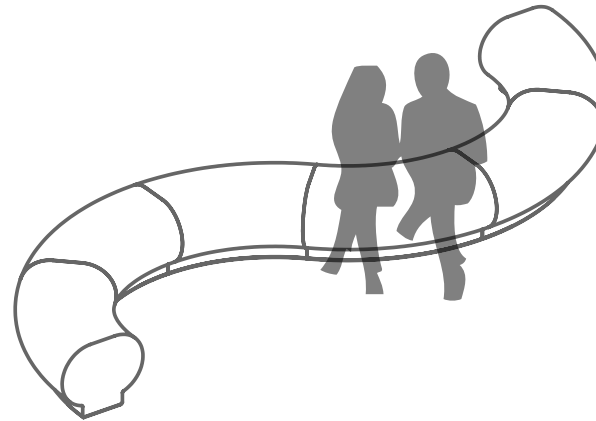
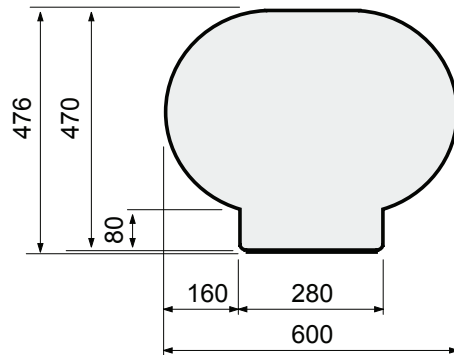
Our range is a stunning collection of geometrically-shaped modular furniture pieces ideal for urban environments, recreational spaces and large-scale commercial interiors.

The range has been designed for mix and match use or pieces can be used standalone.

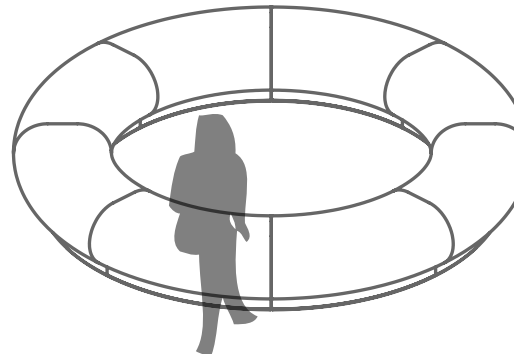
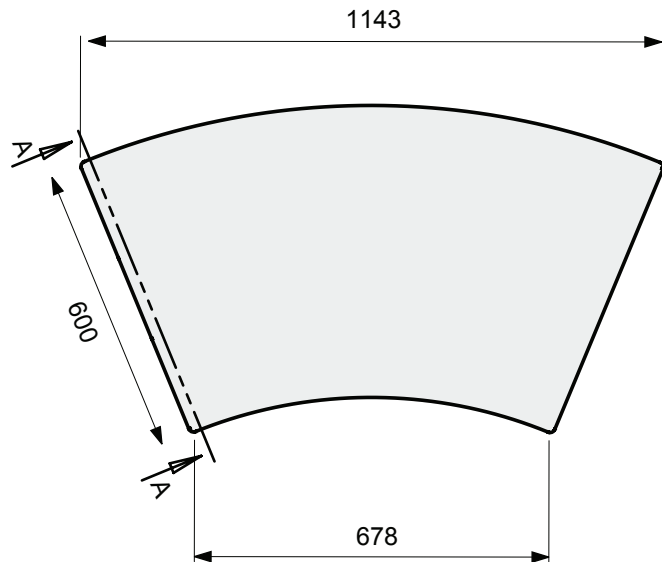
Each piece in the collection is handmade by highly skilled craftspeople based in the UK. The entire range is composite moulded which is the perfect outdoor furniture material as it's weatherproof, lasts a lifetime and requires minimum maintenance.



Halo Seat Profile  
Section A-A



Plan View - 3m circle segment



**Principal Material:**  
Composite moulded.

**Dimensions:**  
1143 x 600 x 476mm.

**Colour:**  
Any BS/RAL colour.

**Each segment can be supplied:**

1. Weighted with a rubber anti-slide base. Approx. 40 kgs.
2. Un-weighted with rubber anti-slide base. Approx. 15 kgs.
3. Fitted with anchor bolts for permanent fixing. Approx. 13 kgs.

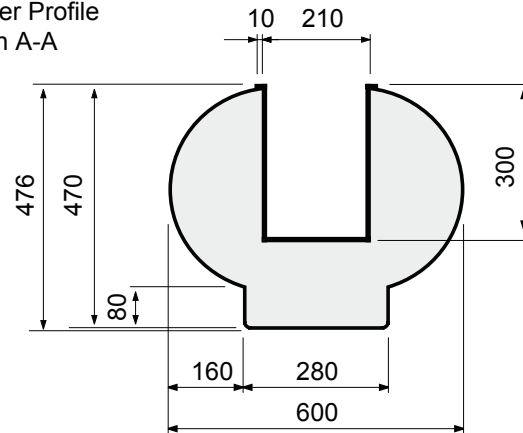
**Supply options:**

1. **Weighted:** Modules supplied weighted to prevent people from easily moving installations to another area. Weighted modules are ideal if you would like the flexibility to move seating at a later date and the security that they will be safe.
2. **Un-weighted:** This supply option offers the utmost in flexibility and is ideal for domestic use or in areas where you want to move seats quickly and easily, such as events/exhibition spaces.
3. **Fitted with anchor bolts:** Modules are complete with anchor bolts for permanent fixing - ideal for public open spaces or where security may be an issue.

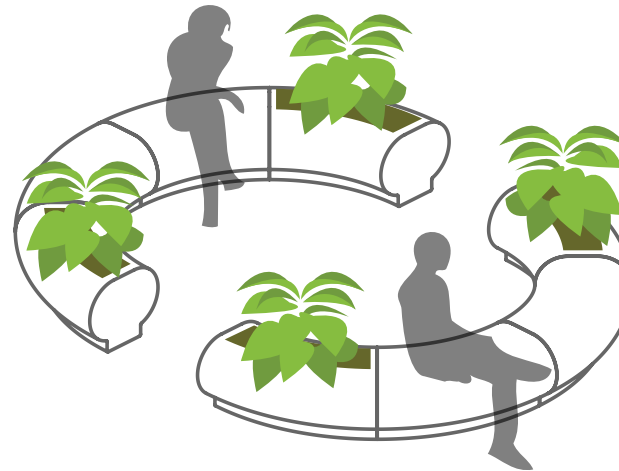
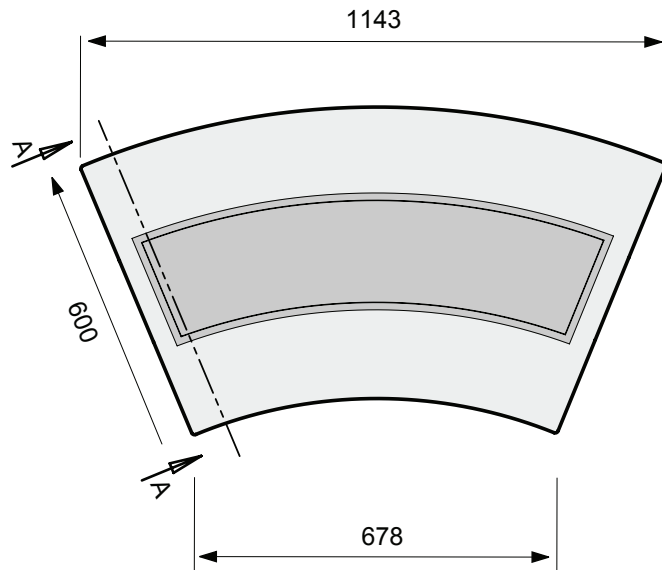


## BX60 Halo single planter - all sizes in mm's

Halo Planter Profile  
Section A-A



Plan View - 3m circle segment



### Principal Material:

Composite moulded.

### Dimensions:

1143 x 600 x 476mm.

### Colour:

Any BS/RAL colour.

### Each segment can be supplied:

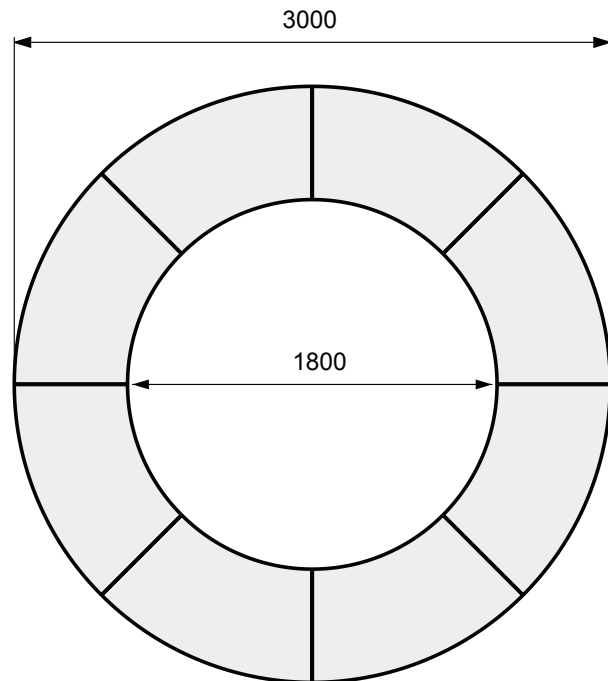
1. Not applicable.
2. Un-weighted with rubber anti-slide base. Approx. 30 kgs.
3. Fitted with anchor bolts for permanent fixing. Approx. 28 kg.
4. With no drainage.
5. With drainage - 8 x 12mm drainage holes.

### Supply options:

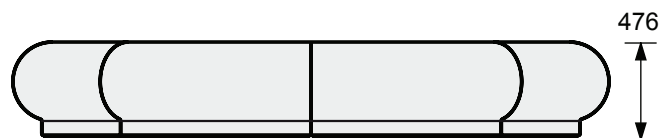
1. **Weighted:** Not available.
2. **Un-weighted:** This supply option offers the utmost in flexibility and is ideal for domestic use or in areas where you want to move seats quickly and easily, such as events/exhibition spaces.
3. **Fitted with anchor bolts:** Modules are complete with anchor bolts for permanent fixing - ideal for public open spaces or where security may be an issue.
4. **With no drainage.**
5. **With drainage:** Modules supplied with drainage holes in bottom.



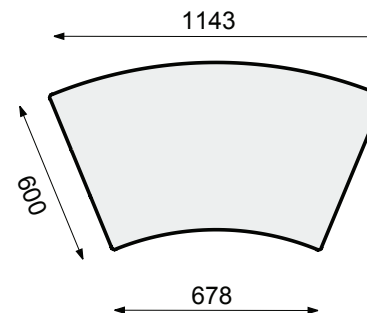
Plan View



Front View



Plan View - 3m seat segment



**Components:**

8 x seats for a complete circle.

**Principal Material:**

Composite moulded.

**Dimensions:**

3000mm diameter x 476mm high.

**Colour:**

Any BS/RAL colour.

**Each segment can be supplied:**

1. Weighted with a rubber anti-slide base. Approx. 40 kgs.
2. Un-weighted with rubber anti-slide base. Approx. 15 kgs.
3. Fitted with anchor bolts for permanent fixing. Approx. 13 kgs.

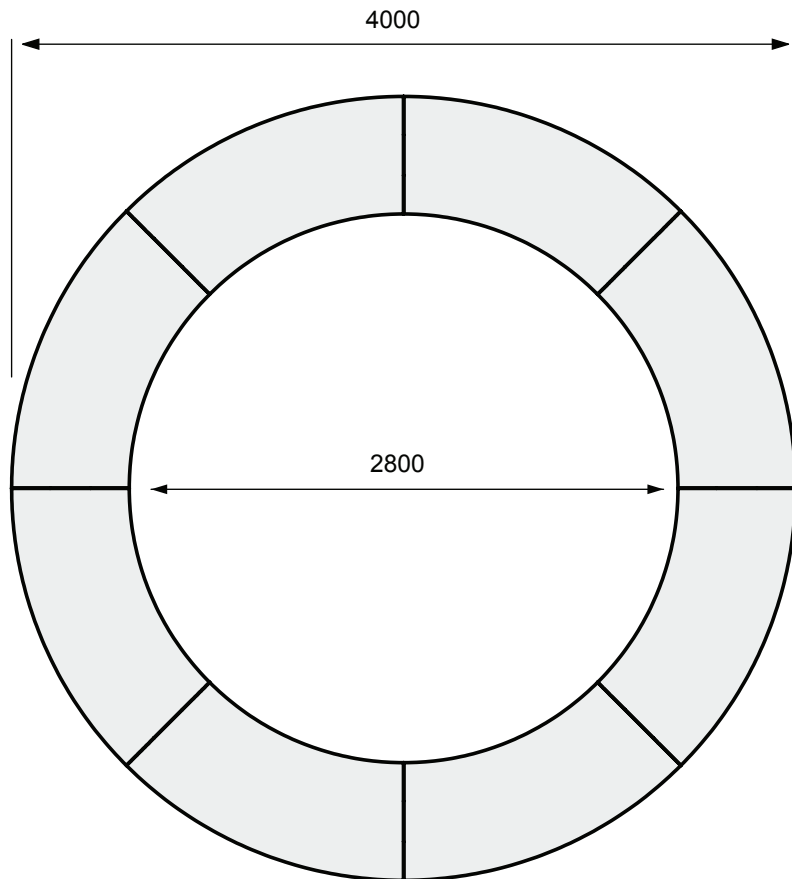
**Supply options:**

1. **Weighted:** Modules supplied weighted to prevent people from easily moving installations to another area. Weighted modules are ideal if you would like the flexibility to move seating at a later date and the security that they will be safe.
2. **Un-weighted:** This supply option offers the utmost in flexibility and is ideal for domestic use or in areas where you want to move seats quickly and easily, such as events/exhibition spaces.
3. **Fitted with anchor bolts:** Modules are complete with anchor bolts for permanent fixing - ideal for public open spaces or where security may be an issue.

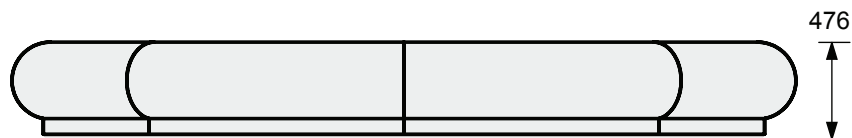


## BX60 Halo 4m 8 seat circle - all sizes in mm's

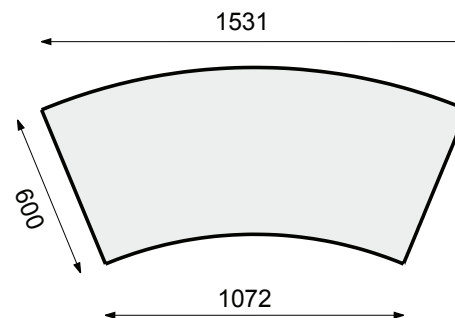
Plan View



Front View



Plan View - 4m seat segment



### Components:

8 x seats for a complete circle.

### Principal Material:

Composite moulded.

### Dimensions:

4000mm diameter x 476mm high.

### Colour:

Any BS/RAL colour.

### Each segment can be supplied:

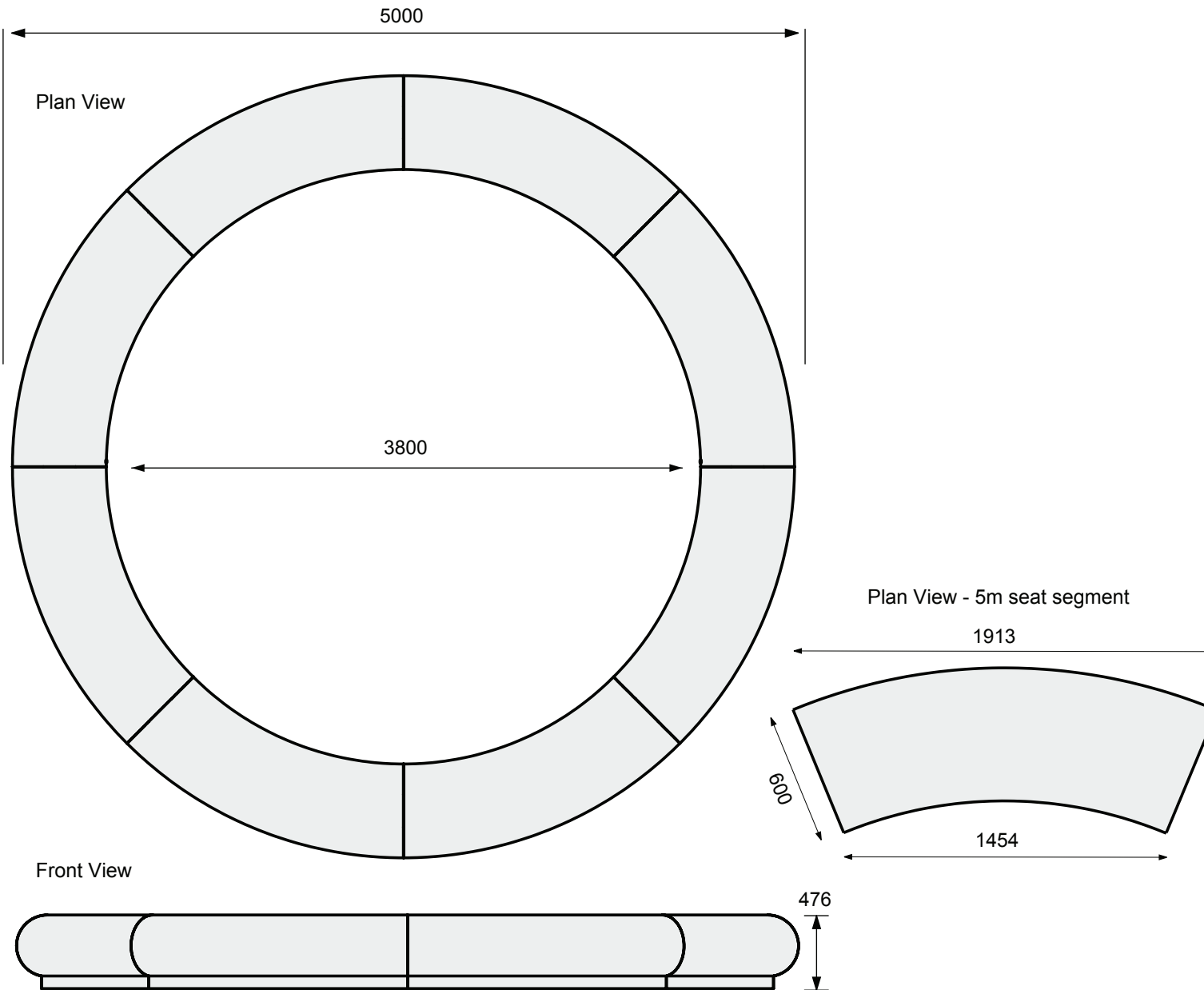
1. Weighted with a rubber anti-slide base. Approx. 40 kgs.
2. Un-weighted with rubber anti-slide base. Approx. 20 kgs.
3. Fitted with anchor bolts for permanent fixing. Approx. 17 kgs.

### Supply options:

1. **Weighted:** Modules supplied weighted to prevent people from easily moving installations to another area. Weighted modules are ideal if you would like the flexibility to move seating at a later date and the security that they will be safe.
2. **Un-weighted:** This supply option offers the utmost in flexibility and is ideal for domestic use or in areas where you want to move seats quickly and easily, such as events/exhibition spaces.
3. **Fitted with anchor bolts:** Modules are complete with anchor bolts for permanent fixing - ideal for public open spaces or where security may be an issue.



## BX60 Halo 5m 8 seat circle - all sizes in mm's



### Components:

8 x seats for a complete circle.

### Principal Material:

Composite moulded.

### Dimensions:

5000mm diameter x 476mm high.

### Colour:

Any BS/RAL colour.

### Each segment can be supplied:

1. Weighted with a rubber anti-slide base. Approx. 40 kgs.
2. Un-weighted with rubber anti-slide base. Approx. 20 kgs.
3. Fitted with anchor bolts for permanent fixing. Approx. 17 kgs.

### Supply options:

1. **Weighted:** Modules supplied weighted to prevent people from easily moving installations to another area. Weighted modules are ideal if you would like the flexibility to move seating at a later date and the security that they will be safe.
2. **Un-weighted:** This supply option offers the utmost in flexibility and is ideal for domestic use or in areas where you want to move seats quickly and easily, such as events/exhibition spaces.
3. **Fitted with anchor bolts:** Modules are complete with anchor bolts for permanent fixing - ideal for public open spaces or where security may be an issue.





1 & 2: Halo circular seating arrangements for a school roof terrace.

3: Playful seating elements were added to create relaxing reading and breakout areas for a public library.

4: Halo circular seating and matching planters for a garden landscape design.



## Broxap Ltd

Rowhurst Industrial Estate  
Chesterton  
Newcastle-under-Lyme  
Staffordshire ST5 6BD

Tel: 01782 564411  
Fax: 01782 565357/562546

Email: [sales@broxap.com](mailto:sales@broxap.com)  
[www.broxap.com](http://www.broxap.com)