



## BX60 Quattro Modular Seats, Tables and Planters

*Quattro - a bold modern, funky design with a friendly shape in your choice of colour. Quattro is perfect as a standalone seat, or for modular group arrangements.*

BX60 116 A seat / table

BX60 116 B planter

# GeoMet

# broxap®

Seating, water features & planters

01782 564411 [www.broxap.com](http://www.broxap.com)



## BX60 Quattro Modular Seating / Tables

Quattro is a modernistic range of seating and tables which are functional yet striking in their simplicity and design.

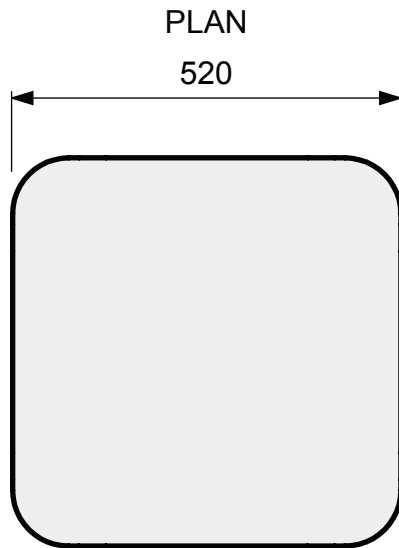
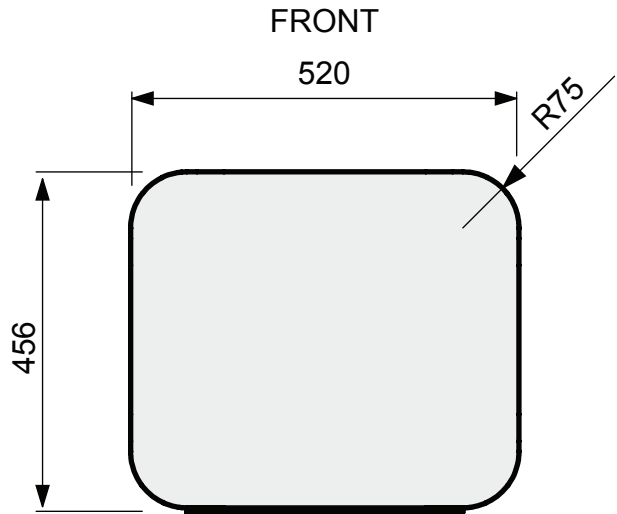
Cube in shape with big curved edges, Quattro has been proven to offer a very comfortable seat.

Each item can be made in a BS/RAL colour to match any colour scheme or corporate interior.

## BX60 Quattro Modular Planters

To complement our stylish range of furniture we also offer a modern planter in a very practical Quattro cubed design.





**Principal Material:**  
Composite moulded.

**Dimensions:**  
520 x 456mm high.

**Colour:**  
Any BS/RAL colour.

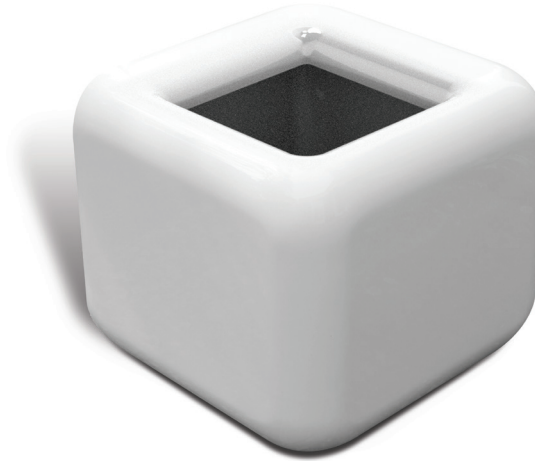
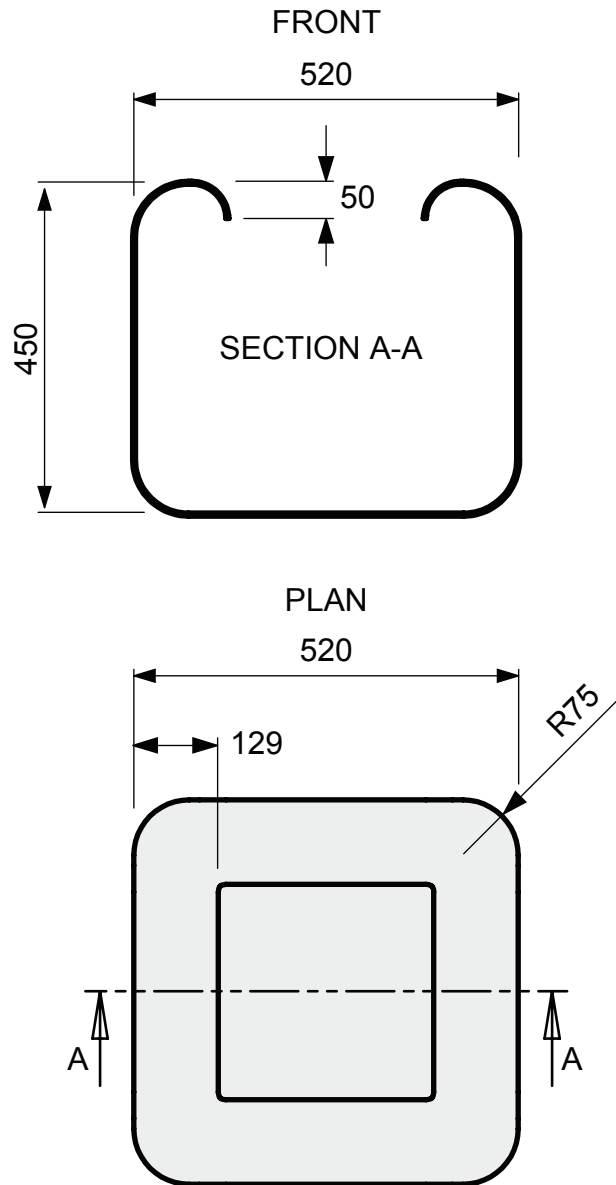
**Each seat can be supplied:**

1. Weighted with a rubber anti-slide base. Approx. 35 kgs.
2. Un-weighted with rubber anti-slide base. Approx. 10 kgs.
3. Fitted with anchor bolts for permanent fixing. Approx. 7 kgs.

**Supply options:**

1. **Weighted:** Modules supplied weighted to prevent people from easily moving installations to another area. Weighted modules are ideal if you would like the flexibility to move seating at a later date and the security that they will be safe.
2. **Un-weighted:** This supply option offers the utmost in flexibility and is ideal for domestic use or in areas where you want to move seats quickly and easily, such as events/exhibition spaces.
3. **Fitted with anchor bolts:** Modules are complete with anchor bolts for permanent fixing - ideal for public open spaces or where security may be an issue.





**Principal Material:**  
Composite moulded.

**Dimensions:**  
520 x 450mm high.

**Colour:**  
Any BS/RAL colour.

**Each planter can be supplied:**

1. Not applicable.
2. Un-weighted with rubber anti-slide base. Approx. 10 kgs.
3. Fitted with anchor bolts for permanent fixing. Approx. 7 kgs.
4. With no drainage.
5. With drainage - 16 x 12mm drainage holes.

**Supply options:**

1. **Weighted:** Not applicable.
2. **Un-weighted:** This supply option offers the utmost in flexibility and is ideal for domestic use or in areas where you want to move seats quickly and easily, such as events/exhibition spaces.
3. **Fitted with anchor bolts:** Modules are complete with anchor bolts for permanent fixing - ideal for public open spaces or where security may be an issue.
4. **With no drainage.**
5. **With drainage:** Modules supplied with drainage holes in bottom.

Our range is a stunning collection of geometrically-shaped modular furniture pieces ideal for urban environs, recreational spaces and large-scale commercial interiors.

The range has been designed for mix and match use or pieces can be used standalone.

Each piece in the collection is handmade by highly skilled craftspeople based in the UK. The entire range is composite moulded which is the perfect outdoor furniture material as it's weatherproof, lasts a lifetime and requires minimum maintenance.

#### Broxap Ltd

Rowhurst Industrial Estate  
Chesterton  
Newcastle-under-Lyme  
Staffordshire ST5 6BD

Tel: 01782 564411  
Fax: 01782 565357/562546

Email: [sales@broxap.com](mailto:sales@broxap.com)  
[www.broxap.com](http://www.broxap.com)