

Burnage Concrete Cube BX211006



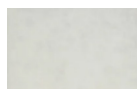
Standard Unit Dimensions:

Length: 450mm
Width: 450mm
Height: 450mm
Weight: 214kg

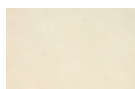
Concrete Colours/Finishes:



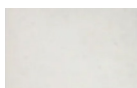
Budget Grey BG01
Dressed



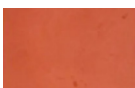
Light Grey LG02
Dressed



Buff YL01
Dressed



White WH03
Dressed



Red RD04
Dressed

The colours shown are a guide only.
Please check a colour chart to see the actual colour.

Product Information

Giving a clean industrial accent that's well worth the investment in high use areas, the Burnage Concrete Cube offers an individual seating option. Available in a range of colour finishes, this is a classic shape and style that won't fall out of fashion.

Features

- Free standing seat
- Low maintenance concrete bench
- Supplied in a dressed finish as standard

Materials Used

- Precast Concrete

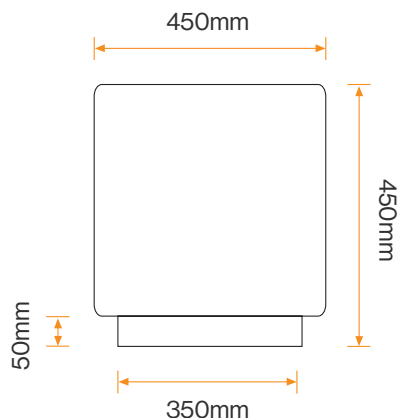
Options

- Can be supplied in a range of colours in an acid etch, exposed aggregate or polished finish

Broxap Limited, Rowhurst Industrial Estate, Chesterton, Newcastle-under-Lyme, Staffordshire, ST5 6BD T: 01782 564411 E: info@broxap.com W: www.broxap.com

Burnage Concrete Cube BX211006

Diagram



Installation

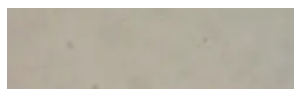
Free Standing
Seat



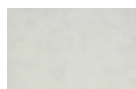
Standard Unit Dimensions:

Length: 450mm
Width: 450mm
Height: 450mm
Weight: 214kg

Concrete Colours/Finishes:



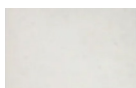
Budget Grey BG01
Dressed



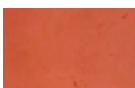
Light Grey LG02
Dressed



Buff YL01
Dressed



White WH03
Dressed



Red RD04
Dressed

The colours shown are a guide only.
Please check a colour chart to see the
actual colour.

Broxap Limited, Rowhurst Industrial Estate, Chesterton, Newcastle-under-Lyme, Staffordshire, ST5 6BD T: 01782 564411 E: info@broxap.com W: www.broxap.com