

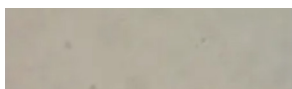
## Holcombe Concrete Seat BX211007



### Standard Unit Dimensions:

Diameter (Top): 900mm  
Diameter (Bottom): 800mm  
Height: 500mm  
Weight: 744kg

### Concrete Colours/Finishes:



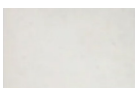
**Budget Grey BG01**  
Dressed



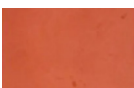
**Light Grey LG02**  
Dressed



**Buff YL01**  
Dressed



**White WH03**  
Dressed



**Red RD04**  
Dressed

The colours shown are a guide only.  
Please check a colour chart to see the  
actual colour.

## Product Information

This beautiful Holcombe Round Concrete Seat brings with it a subtle, minimalist feel that belies its inherent strength and durability. Its shape immediately softens the harshest landscape, and it is available in a range of natural tones.

## Features

- Free standing seat
- Low maintenance concrete bench
- Supplied in a dressed finish as standard

## Materials Used

- Precast Concrete

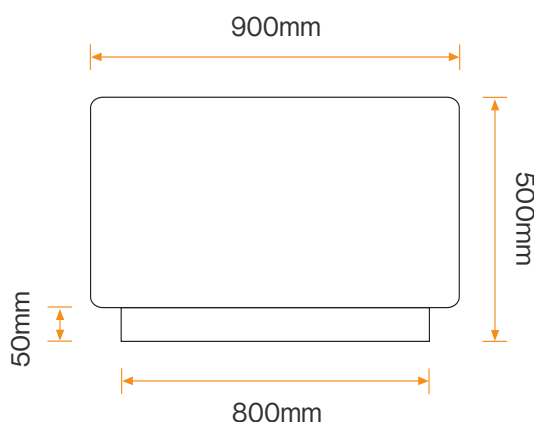
## Options

- Can be supplied in a range of colours in an acid etch, exposed aggregate or polished finish

Broxap Limited, Rowhurst Industrial Estate, Chesterton, Newcastle-under-Lyme, Staffordshire, ST5 6BD T: 01782 564411 E: info@broxap.com W: www.broxap.com

## Holcombe Concrete Seat BX211007

### Diagram



### Installation

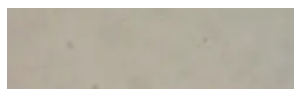
Free Standing  
Seat



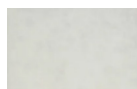
#### Standard Unit Dimensions:

Diameter (Top): 900mm  
Diameter (Bottom): 800mm  
Height: 500mm  
Weight: 744kg

#### Concrete Colours/Finishes:



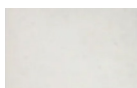
**Budget Grey BG01**  
Dressed



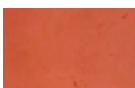
**Light Grey LG02**  
Dressed



**Buff YL01**  
Dressed



**White WH03**  
Dressed



**Red RD04**  
Dressed

The colours shown are a guide only.  
Please check a colour chart to see the  
actual colour.

Broxap Limited, Rowhurst Industrial Estate, Chesterton, Newcastle-under-Lyme, Staffordshire, ST5 6BD T: 01782 564411 E: info@broxap.com W: www.broxap.com