

Cannock Chase Picnic Bench BX14 3210-1

broxap
street furniture



Standard Unit Dimensions:

Length: 1830mm
Width: 1400mm
Height: 800mm
Weight: 180kg

Picnic Unit Colours/Finishes:

RAL 9005 Jet Black	RAL 9016 Traffic White	RAL 7016 Anthracite Grey
RAL 5013 Colbalt Blue	BS 4800 20 C 40 Duchess Blue	BS 4800 00 A 05 Goose Grey
RAL 6005 Green	BS 4800 14 C 39 Holly Green	BS 4800 18 B 25 Admiral Grey
RAL 5015 Sky Blue	RAL 3020 Traffic Red	RAL 1023 Traffic Yellow

The colours shown are a guide only.
Please check a colour chart to see the actual colour.

Product Information

A hard-wearing picnic bench designed for outdoor locations. Great for busy sites thanks to its superior build and durability. A self-contained unit, available in a range of colours, with a familiar style and tried-and-tested form.

Features

- Supplied flat packed for assembly by others
- Galvanised to BS EN ISO 1461:2009
- Supplied base plated or root fixed
- Galvanized steel and polyester powder coated in a single Broxap colour

Materials Used

- Galvanised steel

Options

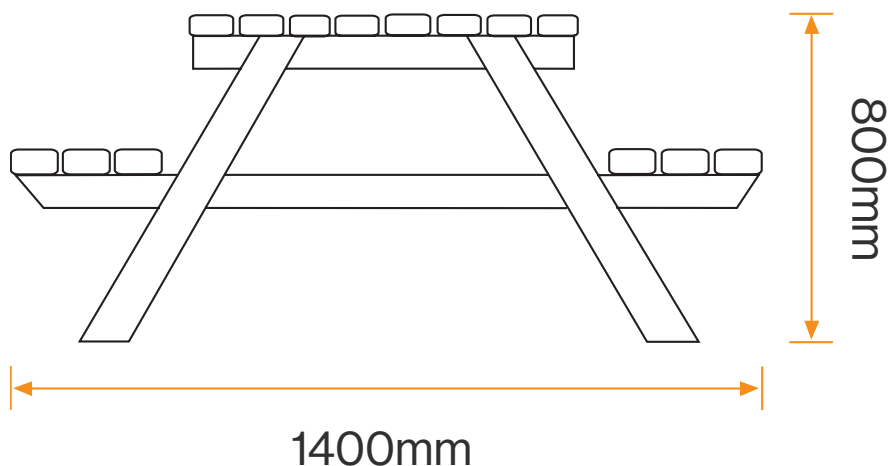
- Extended table top - slats overhang to give easy access to accommodate wheelchairs at one end
- Also available with seating on one side only

Broxap Limited, Rowhurst Industrial Estate, Chesterton, Newcastle-under-Lyme, Staffordshire, ST5 6BD T: 01782 564411 E: info@broxap.com W: www.broxap.com



Cannock Chase Picnic Bench BX14 3210-1

Diagram

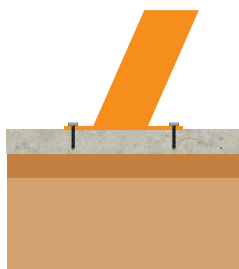


Installation

Surface Mounted
Baseplate

Root/Submerged
Fixing

Free Standing
Picnic Bench



Standard Unit Dimensions:

Length: 1830mm
Width: 1400mm
Height: 800mm
Weight: 180kg

Picnic Unit Colours/Finishes:

RAL 9005 Jet Black	RAL 9016 Traffic White	RAL 7016 Anthracite Grey
RAL 5013 Colbalt Blue	BS 4800 20 C 40 Duchess Blue	BS 4800 00 A 05 Goose Grey
RAL 6005 Green	BS 4800 14 C 39 Holly Green	BS 4800 18 B 25 Admiral Grey
RAL 5015 Sky Blue	RAL 3020 Traffic Red	RAL 1023 Traffic Yellow

The colours shown are a guide only.
Please check a colour chart to see the actual colour.

Broxap Limited, Rowhurst Industrial Estate, Chesterton, Newcastle-under-Lyme, Staffordshire, ST5 6BD T: 01782 564411 E: info@broxap.com W: www.broxap.com