

Cannock Chase Picnic Bench with Wheelchair Access

BX14 3210

broxap
street furniture



Standard Unit Dimensions:

Length: 2440mm
Width: 1400mm
Height: 800mm
Weight: 180kg

Picnic Unit Colours/Finishes:

RAL 9005 Jet Black	RAL 9016 Traffic White	RAL 7016 Anthracite Grey
RAL 5013 Colbalt Blue	BS 4800 20 C 40 Duchess Blue	BS 4800 00 A 05 Goose Grey
RAL 6005 Green	BS 4800 14 C 39 Holly Green	BS 4800 18 B 25 Admiral Grey
RAL 5015 Sky Blue	RAL 3020 Traffic Red	RAL 1023 Traffic Yellow

The colours shown are a guide only.
Please check a colour chart to see the actual colour.

Product Information

An all-steel picnic unit with an extended table top designed to provide dual purpose disabled and able-bodied facilities. The design of the Cannock Chase Picnic Bench aims to remove barriers to spending time outdoors. A long-lasting and highly durable all-steel picnic unit, this bench will provide inclusive rest facilities for years to come.

Features

- Supplied flat packed for assembly by others
- Galvanised to BS EN ISO 1461:2009
- Galvanized steel and polyester powder coated in a single Broxap colour
- Extended table top designed to provide dual purpose disabled and able-bodied

Materials Used

- Galvanised steel

Options

- Also available with seating on one side only
- Available as a standard picnic unit

Broxap Limited, Rowhurst Industrial Estate, Chesterton, Newcastle-under-Lyme, Staffordshire, ST5 6BD T: 01782 564411 E: info@broxap.com W: www.broxap.com



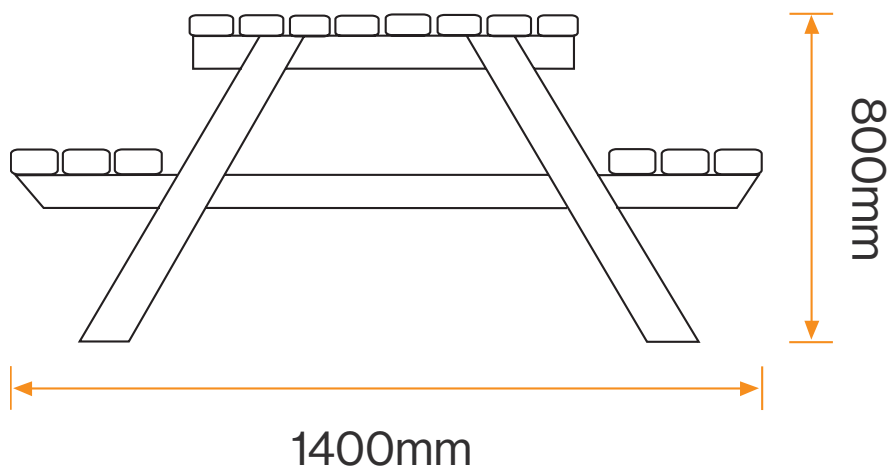
All dimensions are in millimeters, weights in kilograms and capacities in litres, are approximate and do not form any part of the contract. All prices are guide prices only and should be used for estimating purposes only. Broxap Limited reserve the right to change the design, specification or price of any item sold at any time. All prices exclude VAT and delivery. Please Note: All information on this data sheet is subject to orientation (N,S,E,W) altitude and proximity to buildings, but is sufficient for use as general/preliminary information).

Cannock Chase Picnic Bench with Wheelchair Access

BX14 3210

broxap
street furniture

Diagram

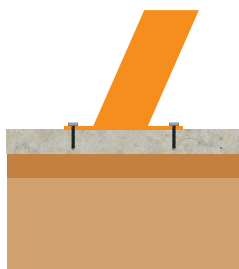


Installation

Surface Mounted
Baseplate

Root/Submerged
Fixing

Free Standing
Picnic Bench



Standard Unit Dimensions:

Length: 2440mm
Width: 1400mm
Height: 800mm
Weight: 180kg

Picnic Unit Colours/Finishes:

RAL 9005 Jet Black	RAL 9016 Traffic White	RAL 7016 Anthracite Grey
RAL 5013 Colbalt Blue	BS 4800 20 C 40 Duchess Blue	BS 4800 00 A 05 Goose Grey
RAL 6005 Green	BS 4800 14 C 39 Holly Green	BS 4800 18 B 25 Admiral Grey
RAL 5015 Sky Blue	RAL 3020 Traffic Red	RAL 1023 Traffic Yellow

The colours shown are a guide only.
Please check a colour chart to see the actual colour.

Broxap Limited, Rowhurst Industrial Estate, Chesterton, Newcastle-under-Lyme, Staffordshire, ST5 6BD T: 01782 564411 E: info@broxap.com W: www.broxap.com

