

## Eastgate Cast Iron Seat BX 2020-BP



### Standard Unit Dimensions:

Length: 1800mm  
Width: 620mm  
Height: 830mm  
Weight: 110kg

### Framework Colours/Finishes:

RAL 9005 Jet Black	RAL 9016 Traffic White	RAL 7016 Anthracite Grey
-----------------------	---------------------------	-----------------------------

RAL 5013 Colbalt Blue	BS 4800 20 C 40 Duchess Blue	BS 4800 00 A 05 Goose Grey
--------------------------	------------------------------------	----------------------------------

RAL 6005 Green	BS 4800 14 C 39 Holly Green	BS 4800 18 B 25 Admiral Grey
-------------------	-----------------------------------	------------------------------------

RAL 5015 Sky Blue	RAL 3020 Traffic Red	RAL 1023 Traffic Yellow
----------------------	-------------------------	----------------------------

The colours shown are a guide only.  
Please check a colour chart to see the actual colour.

## Product Information

Our most popular cast iron framed seat featuring nine hardwood slats in a planed and sanded finish as standard. The Eastgate Seat can be customised to suit any setting with a wide variety of colours available as well as highlighting, the addition of crests and logos, and the inclusion of a plaque.

## Features

- Traditional style cast iron seat with hardwood slats
- Ideal for parks, gardens and recreational areas
- Frame painted in a single Broxap RAL or BS colour

## Materials Used

- Cast Iron
- Hardwood iroko slats

## Other Materials Available

- Recycled plastic slats

Broxap Limited, Rowhurst Industrial Estate, Chesterton, Newcastle-under-Lyme, Staffordshire, ST5 6BD T: 01782 564411 E: info@broxap.com W: www.broxap.com



ISO 9001  
Quality  
Management  
Systems  
CERTIFIED

ISO 14001  
Environmental  
Management  
Systems  
CERTIFIED

ISO 45001  
Occupational  
Health and Safety  
Management  
Systems  
CERTIFIED

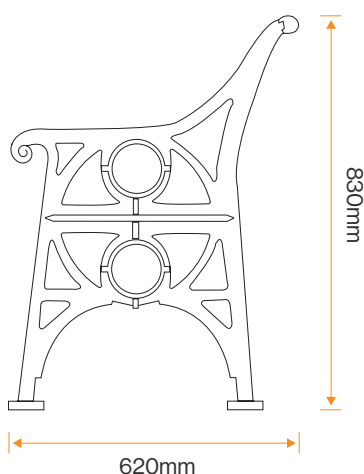


## Eastgate Cast Iron Seat BX 2020-BP

### Options

- Softwood slats available
- Black or brown recycled plastic slats available
- Highlighting and crests are available at an extra cost
- Stainless Steel Plaques

### Diagram



#### Standard Unit Dimensions:

Length: 1800mm  
Width: 620mm  
Height: 830mm  
Weight: 110kg

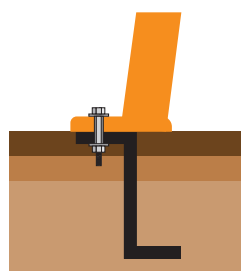
#### Framework Colours/Finishes:

RAL 9005 Jet Black	RAL 9016 Traffic White	RAL 7016 Anthracite Grey
RAL 5013 Colbalt Blue	BS 4800 20 C 40 Duchess Blue	BS 4800 00 A 05 Goose Grey
RAL 6005 Green	BS 4800 14 C 39 Holly Green	BS 4800 18 B 25 Admiral Grey
RAL 5015 Sky Blue	RAL 3020 Traffic Red	RAL 1023 Traffic Yellow

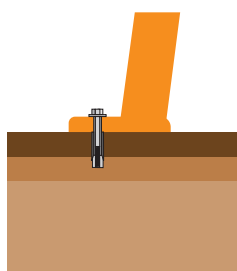
The colours shown are a guide only.  
Please check a colour chart to see the actual colour.

### Installation

#### Extension Legs



#### Ground Bolting



Broxap Limited, Rowhurst Industrial Estate, Chesterton, Newcastle-under-Lyme, Staffordshire, ST5 6BD T: 01782 564411 E: info@broxap.com W: www.broxap.com



ISO 9001  
Quality  
Management  
Systems  
CERTIFIED

ISO 14001  
Environmental  
Management  
CERTIFIED

ISO 45001  
Occupational  
Health and Safety  
Management  
CERTIFIED

