

Bollards Specification Sheet

Selhurst Concrete Bollard BX18 3503

broxap[®]
bollards & barriers



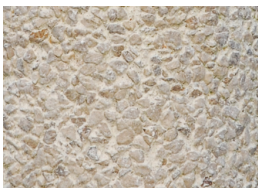
Standard Unit Dimensions:

Above Ground Height: 500mm
Root Length: 400mm
Diameter: 250mm

Concrete Finishes:



Natural Round Finish



Ballidon Finish

Product Information

Concrete bollard with exposed aggregate finish

Features

- Concrete bollard
- Exposed aggregate finish
- Smooth grooved band

Materials Used

- Concrete

Options

- Finish options: Ballidon or Natural Round

Broxap Limited, Rowhurst Industrial Estate, Chesterton, Newcastle-under-Lyme, Staffordshire, ST5 6BD T: 01782 564411 E: info@broxap.com W: www.broxap.com



ISO 9001
Quality
Management
Systems
CERTIFIED

ISO 14001
Environmental
Management
Systems
CERTIFIED

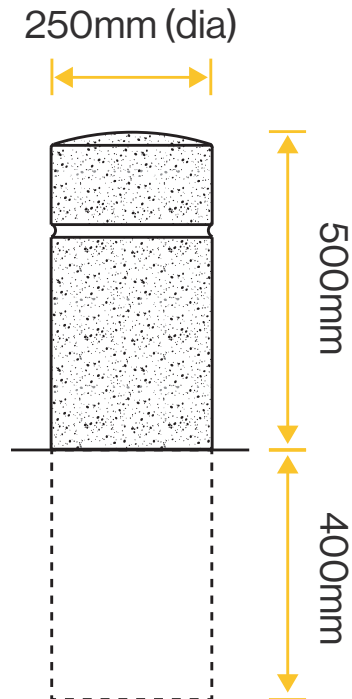
ISO 45001
Occupational
Health and Safety
Management
Systems
CERTIFIED



All dimensions are in millimeters, weights in kilograms and capacities in litres, are approximate and do not form any part of the contract. All prices are guide prices only and should be used for estimating purposes only. Broxap Limited reserve the right to change the design, specification or price of any item sold at any time. All prices exclude VAT and delivery. Please Note: All information on this data sheet is subject to orientation (N,S,E,W) altitude and proximity to buildings, but is sufficient for use as general/preliminary information).

Selhurst Concrete Bollard BX18 3503

Diagram



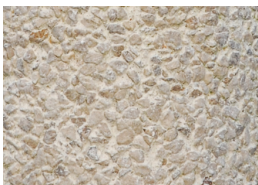
Standard Unit Dimensions:

Above Ground Height: 500mm
Root Length: 400mm
Diameter: 250mm

Concrete Finishes:



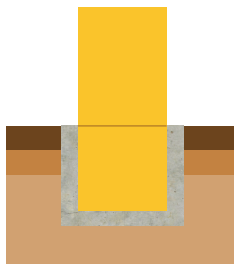
Natural Round Finish



Ballidon Finish

Installation

Root Fixed
Bollard



Broxap Limited, Rowhurst Industrial Estate, Chesterton, Newcastle-under-Lyme, Staffordshire, ST5 6BD T: 01782 564411 E: info@broxap.com W: www.broxap.com



ISO 9001
Quality
Management
Systems
CERTIFIED

ISO 14001
Environmental
Management
Systems
CERTIFIED

ISO 45001
Occupational
Health and Safety
Management
Systems
CERTIFIED



Constructionline
Gold Member

