

Blackburn Seat BX 2047-BP



Standard Unit Dimensions:

Length: 1800mm
Width: 605mm
Height: 840mm
Weight: 76kg

Framework Colours/Finishes:

RAL 9005 Jet Black	RAL 9016 Traffic White	RAL 7016 Anthracite Grey
-----------------------	---------------------------	-----------------------------

RAL 5013 Colbalt Blue	BS 4800 20 C 40 Duchess Blue	BS 4800 00 A 05 Goose Grey
--------------------------	------------------------------------	----------------------------------

RAL 6005 Green	BS 4800 14 C 39 Holly Green	BS 4800 18 B 25 Admiral Grey
-------------------	-----------------------------------	------------------------------------

RAL 5015 Sky Blue	RAL 3020 Traffic Red	RAL 1023 Traffic Yellow
----------------------	-------------------------	----------------------------

The colours shown are a guide only.
Please check a colour chart to see the actual colour.

Product Information

Cast iron frame seat in streamlined contemporary design, eleven Iroko slats in a planed and sanded finish as standard. With both simplicity and style, the Blackburn Seat is equally at home in a busy high street as it is in a park or quiet courtyard.

Features

- Contemporary style cast iron seat with hardwood slats
- Ideal for any location
- Frame painted in a single Broxap RAL or BS colour

Materials Used

- Cast Iron
- Hardwood iroko slats

Other Materials Available

- Recycled plastic slats

Broxap Limited, Rowhurst Industrial Estate, Chesterton, Newcastle-under-Lyme, Staffordshire, ST5 6BD T: 01782 564411 E: info@broxap.com W: www.broxap.com



ISO 9001
Quality
Management
Systems
CERTIFIED

ISO 14001
Environmental
Management
CERTIFIED

ISO 45001
Occupational
Health and Safety
Management
CERTIFIED

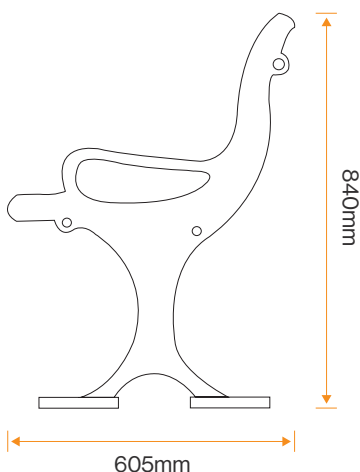


Blackburn Seat BX 2047-BP

Options

- Highlighting and crests are available at an extra cost
- The cast iron frame is available in a range of colours

Diagram



Installation

Standard Unit Dimensions:

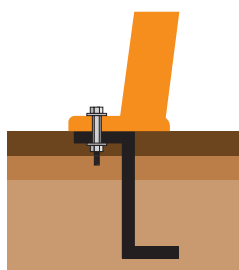
Length: 1800mm
Width: 605mm
Height: 840mm
Weight: 76kg

Framework Colours/Finishes:

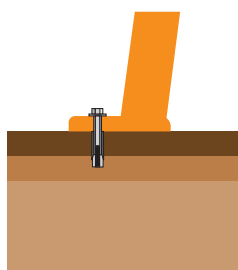
RAL 9005 Jet Black	RAL 9016 Traffic White	RAL 7016 Anthracite Grey
RAL 5013 Colbalt Blue	BS 4800 20 C 40 Duchess Blue	BS 4800 00 A 05 Goose Grey
RAL 6005 Green	BS 4800 14 C 39 Holly Green	BS 4800 18 B 25 Admiral Grey
RAL 5015 Sky Blue	RAL 3020 Traffic Red	RAL 1023 Traffic Yellow

The colours shown are a guide only.
Please check a colour chart to see the actual colour.

Extension Legs



Ground Bolting



Broxap Limited, Rowhurst Industrial Estate, Chesterton, Newcastle-under-Lyme, Staffordshire, ST5 6BD T: 01782 564411 E: info@broxap.com W: www.broxap.com



ISO 9001
Quality
Management
Systems
CERTIFIED

ISO 14001
Environmental
Management
Systems
CERTIFIED

ISO 45001
Occupational
Health and Safety
Management
Systems
CERTIFIED

