

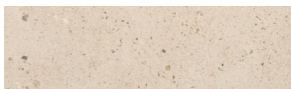
Gorton Concrete Cube Seat BX211000



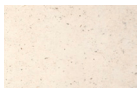
Standard Unit Dimensions:

Length: 600mm
Width: 600mm
Height: 450mm
Weight: 384kg

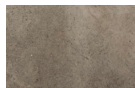
Concrete Colours/Finishes:



LG01
Acid Etched



WH03
Acid Etched



BL03
Acid Etched



RD10
Acid Etched



YL01
Acid Etched

The colours shown are a guide only.
Please check a colour chart to see the actual colour.

Product Information

The Gorton Concrete Cube Seat is a great choice for landscapes with clever spacings and layouts. Mix and match with urban or natural surroundings or get in touch to discuss the option of adding slatted timber seats.

Features

- Surface mounted seat
- Low maintenance concrete bench
- Supplied acid etched as standard

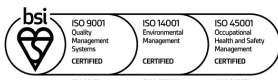
Materials Used

- Precast Concrete

Options

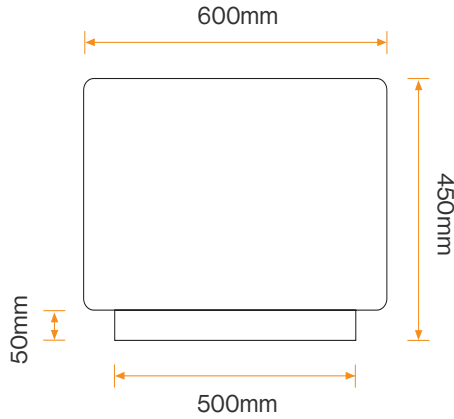
- Available in different finishes:
 - Acid Etched
 - Acid Etched with Smooth Buffed Top
 - Acid Etched with Deluxe Polished Top

Broxap Limited, Rowhurst Industrial Estate, Chesterton, Newcastle-under-Lyme, Staffordshire, ST5 6BD T: 01782 564411 E: info@broxap.com W: www.broxap.com



Gorton Concrete Cube Seat BX211000

Diagram



Installation

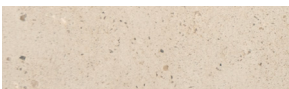
Surface Mounted



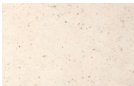
Standard Unit Dimensions:

Length: 600mm
Width: 600mm
Height: 450mm
Weight: 384kg

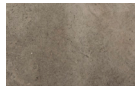
Concrete Colours/Finishes:



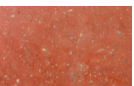
LG01
Acid Etched



WH03
Acid Etched



BL03
Acid Etched



RD10
Acid Etched



YL01
Acid Etched

The colours shown are a guide only.
Please check a colour chart to see the actual colour.

Broxap Limited, Rowhurst Industrial Estate, Chesterton, Newcastle-under-Lyme, Staffordshire, ST5 6BD T: 01782 564411 E: info@broxap.com W: www.broxap.com

