

Apollo Junior Cycle Shelter

BXMW/APJ



Standard Unit Dimensions

Width (overall): 2753mm

Height: 2194mm (h-front)

1513mm (h-rear)

Length with Capacities

3600mm 8 cycles

4100mm 10 cycles

5000mm 12 cycles

Features

Robust modular construction

Load bearing purlins

Welded end frames

Made from heavy-duty mild steel circular section

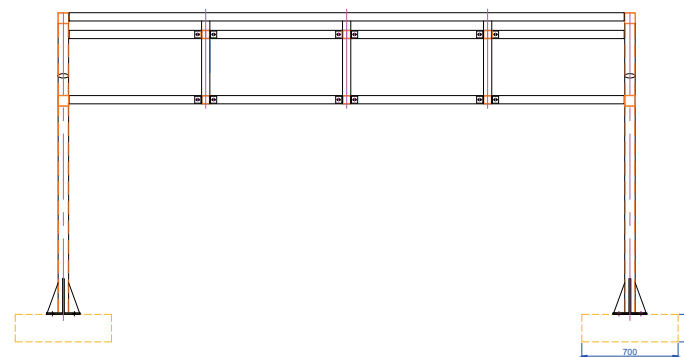
Assembled with anti-tamper high strength bolts

Anti-climb end frames

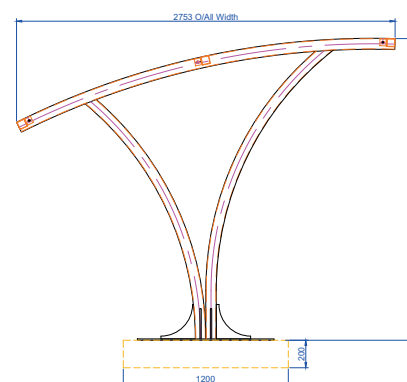
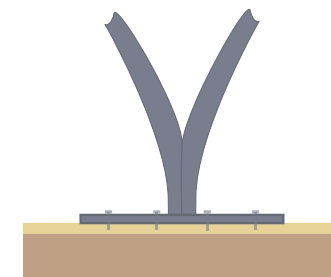
Hot dip galvanized to BS EN ISO 1461:2009

Weather resistant cladding

N.B. It is recommended this shelter is used as a front entry shelter only due to the roof height at the rear.



Surface fixing on concrete



Apollo Junior Cycle Shelter BXMW/APJ

Materials Used

Framework - Mild Steel
Cladding - 4 mm PETG uv
Fasteners - Zinc Plated
Cover Strips - Pre-galvanized steel flat

Finish Options (Framework)

Hot-Dip Galvanized to BS EN ISO 1461:2009
Hot-Dip Galvanized & Polyester Powder Coated 60mm-120mm dft
Hot-Dip Galvanized with Duplex (Zinc Coated) Powder Coating (coastal) 180-240 overall dft

Weather Resistance

Cladding is UV Stabilised
Wind resistant to 23m/s

Fire Resistance

Cladding is fire tested to '1Y' for BS 476

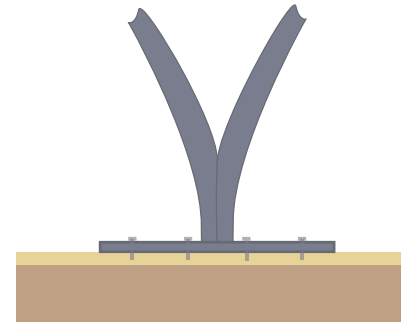
Design-Life, Guarantees & Warranties (terms apply)

25 year structural guarantee
34 year (min) life expectancy for Hot Dip Galvanizing
8-10 year life expectancy on standard powder coatings
10-15 year life expectancy on Duplex (Zinc Coated) powder coatings
10 years manufacturers guarantee on cladding material
10 year warranty on product materials
12 year warranty on parts & labour

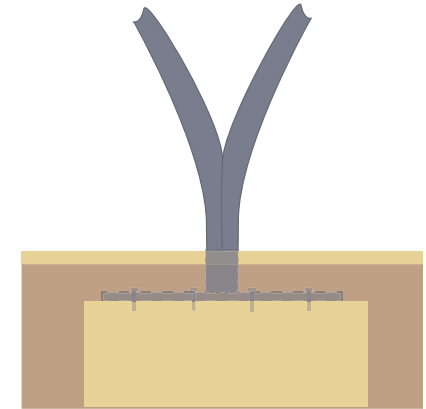
Please Note: All information on this data sheet is subject to orientation (N,S,E,W) altitude and proximity to buildings, but is sufficient for use as general/preliminary information)

Installation

Surface fixing on concrete



Submerged Fixing



Options

Trapezoidal roof cladding
Powder Coating to a wide range of colours
LED or solar lighting
Full Installation Service
Varied Range of Cycle Racks
Varied Range of Cycle Stands

Colours/Finishes



THE COLOURS SHOWN ARE A GUIDE ONLY.
PLEASE CHECK A COLOUR CHART TO SEE THE
ACTUAL COLOUR.