



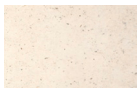
Standard Unit Dimensions:

Length: 600mm
 Width: 600mm
 Height: 450mm
 Weight: 150kg

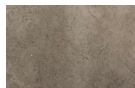
Concrete Colours/Finishes:



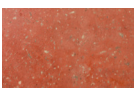
LG01
 Acid Etched



WH03
 Acid Etched



BL03
 Acid Etched



RD10
 Acid Etched



YL01
 Acid Etched

The colours shown are a guide only.
 Please check a colour chart to see the actual colour.

Product Information

Designed and manufactured in the UK, the Altrincham Corner Unit is perfect for outdoor spaces and social environments. The Altrincham Corner Unit is designed for use with Broxap's Altrincham pre-cast concrete benches and planters to create stunning spaces for everybody to enjoy.

Features

- Channel to base
- Low maintenance and durable precast concrete bench
- Surface mounted seat

Materials Used

- Concrete

Options

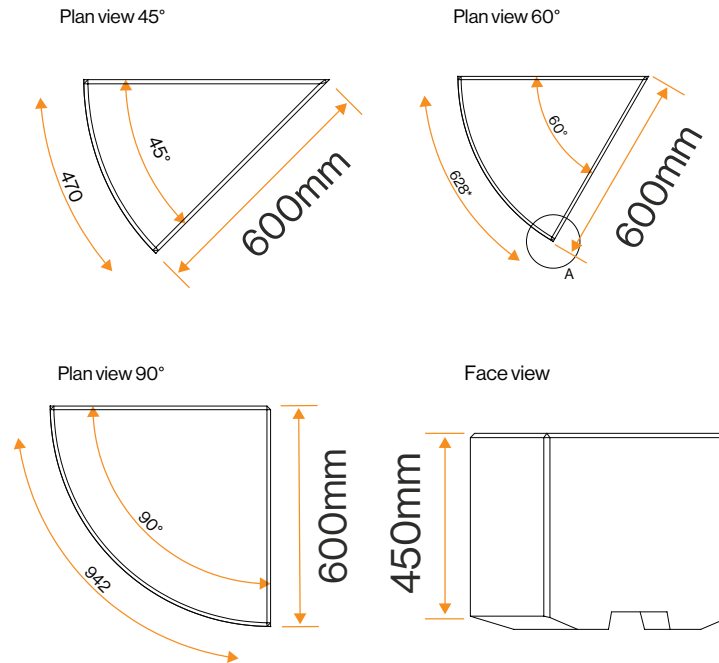
- Available in a variety of angles: 45, 60, 90
- Available with Softwood or Iroko timber slats
- Available in different finishes:
 - Acid Etched
 - Acid Etched with Smooth Buffed Top
 - Acid Etched with Deluxe Polished Top

Broxap Limited, Rowhurst Industrial Estate, Chesterton, Newcastle-under-Lyme, Staffordshire, ST5 6BD T: 01782 564411 E: info@broxap.com W: www.broxap.com



Altrincham Corner Unit BX211061

Diagram



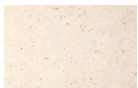
Standard Unit Dimensions:

Length: 600mm
Width: 600mm
Height: 450mm
Weight: 150kg

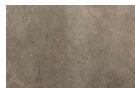
Concrete Colours/Finishes:



LG01
Acid Etched



WH03
Acid Etched



BL03
Acid Etched



RD10
Acid Etched



YL01
Acid Etched

The colours shown are a guide only.
Please check a colour chart to see the actual colour.

Installation

Surface mounted



Broxap Limited, Rowhurst Industrial Estate, Chesterton, Newcastle-under-Lyme, Staffordshire, ST5 6BD T: 01782 564411 E: info@broxap.com W: www.broxap.com

