

Post fixings



Root fixed (-RT)

Cast Iron and Ductile Iron posts are available with round or square roots of various lengths dependant on the post type.



Core drilled

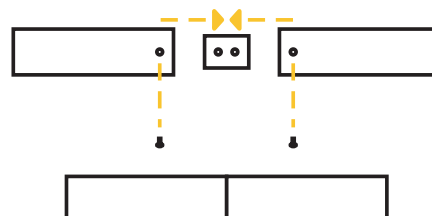
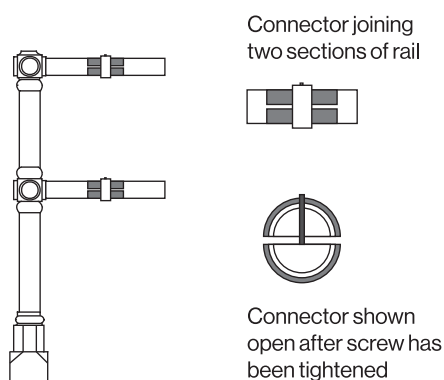
Where excavation is not convenient various posts depending on the root size may be fixed by core drilling. A section of the ground is cored and removed, the post is then positioned and secured with a non shrink resin providing a secure and neat fixing.



Baseplated (-BP)

Posts may be supplied with a pre-drilled baseplate which allows the post to be bolted to the surface of the ground. This may be advantageous where underground services are present such as electric cables or pipe work requiring shallow foundations.

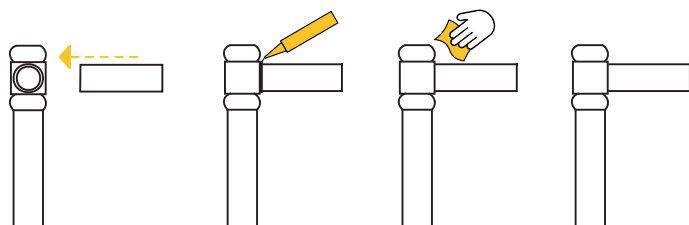
Rail fixings



Mild Steel tube is available in various diameters to suit each post application. Steel rail is supplied galvanised in straight 6 metre lengths. To join each length of rail tube connectors are used as indicated in diagrams above.

Stainless Steel is also supplied in straight 6 metre lengths. Discreet internal connectors are used as an option to join each rail section.

Expansion joints may also be utilised in conjunction with the previous rail tube and connector combinations to allow for expansion and contraction of rail tube in certain applications. Please contact one of our technical sales advisors for further information.



Rail tube is secured into the rail using a polyurethane sealant as indicated in the image to the left.

Mild Steel Tubular Rail

Code	Size
BX70 Rail-25	25 mm dia. x 6000 mm
BX70 Rail-33.7	33.7 mm dia. x 6000 mm
BX70 Rail-42.4	42.4 mm dia. x 6000 mm
BX70 Rail-48.3	48.3 mm dia. x 6000 mm
BX70 Rail-60.3	60.3 mm dia. x 6000 mm

Stainless Steel Rail Tube

Code	Size
Bx47 Rail-25	25 mm dia. x 6000 mm
Bx47 Rail-33.7	33.7 mm dia. x 6000 mm
Bx47 Rail-42.4	42.4 mm dia. x 6000 mm
Bx47 Rail-48.3	48.3 mm dia. x 6000 mm
Bx47 Rail-60.3	60.3 mm dia. x 6000 mm